

EVERFI®

Impact-as-a-Service™





There is a massive network coalescing around the notion that **a company's success is directly tied to the impact it has on the communities it serves...**EVERFI is addressing the missing learning layer, reimagining education on critical skills that can drive ecosystems of change for generations to come.


Tom Davidson



The Problem

Companies are struggling to deploy, measure, and report their social impact to a complex mix of constituencies—customers, employees, regulators, and the public.

The solution required is a scalable mix of content and data tools. There needs to be a *horizontal, software-driven answer* to this growing challenge for companies.



Organizations are Seeking Sustainable Impact

FORTUNE

Revisiting the Business Roundtable's 'Stakeholder Capitalism,' one year later



Calls for action on responsible capitalism provide WEF backdrop



COVID-19 & Racial Justice Movement Drive Dramatic Shift in Corporate Social Responsibility's Priorities; Support of Racial Equity Now a Long-Term Priority

Bloomberg Green

Investors With \$4 Trillion Ask Banks to Raise Climate Ambitions

MarketWatch

Mentions of 'ESG' and sustainability are being made on thousands of corporate earnings calls



With Great Power Comes Great Corporate Social Responsibility

DEFINITION

Impact-as-a-Service™

Impact-as-a-Service companies offer turn-key software solutions that leverage data and outcomes on a recurring basis to ensure effective, continued focus on the most critical issues facing society. These companies build and deploy engaging, standards-based digital programs across multiple topic areas, targeting various populations and communities.



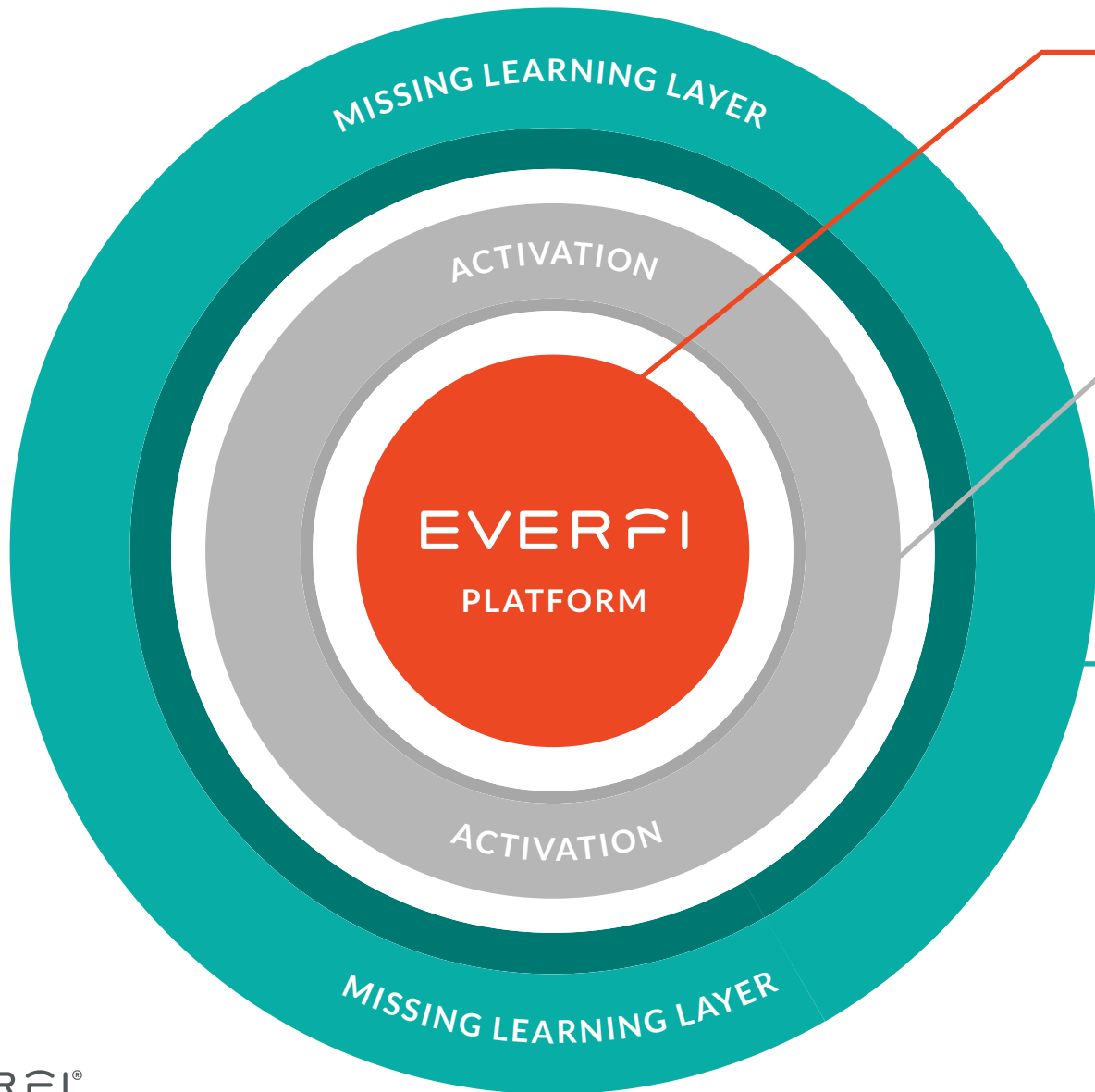


Our Solution

EVERFI is committed to helping organizations address the **Missing Learning Layer** and infrastructure to deliver **Impact-as-a-Service** in their communities, empowering individuals with the tools and skills to drive ecosystems of change and inspire lifelong success.

EVERFI®

Empowering Communities at Scale



EVERFI brings together people, insights, and solutions to drive lasting social impact for millions of learners every year.

Platform

A combination of cloud-based technology, data, analytics and reporting.



Impact Data



Regulatory Reporting



Research and Insights



Analytics and Tracking

Activation

Our unique and proprietary approach ensures the delivery of educational offerings that drive impact on learners at every level and in all environments.



Employee Giving/Volunteering



Events and Media Campaigns



Implementation Support



Analytics and Tracking

The Missing Learning Layer

EVERFI's digital education captures the 12 most important topics for lifelong success.



Academic Foundations



College and Career Readiness



Digital Wellness



Diversity, Equity, & Inclusion



Financial Literacy and Education



Health and Mental Wellness



Next Gen Skills



Organizational Integrity



Social Emotional Learning



Substance Misuse



Sustainability



Healthcare Literacy

Our Focus Areas



Financial Education

Drive financial capability to empower learners of all ages and enable resilient communities.

Community Engagement

Power your organization's social impact initiatives to make measurable progress and create lasting change.

Workplace Training

Build a more ethical workplace and strengthen your company culture with effective HR and compliance training.

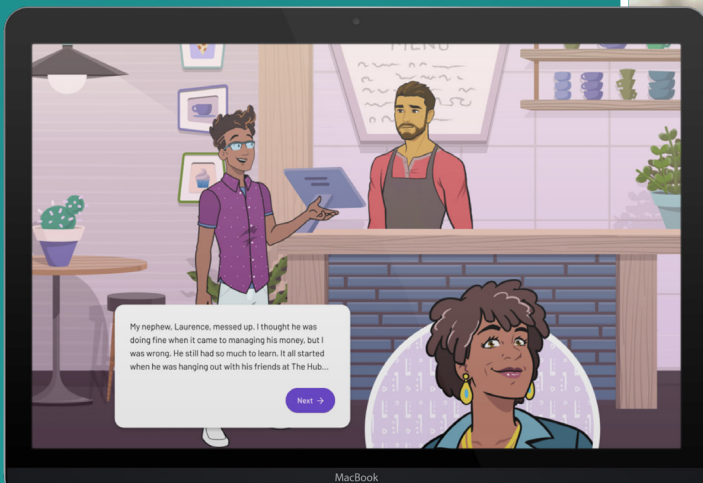




EVERFI®

Financial Education

- Personal Finance 101
- Savings & Financial Security
- Managing Credit & Debt
- Crypto
- Small Business & Entrepreneurship
- Financial Planning for Higher Education



Community Engagement

Sustainability

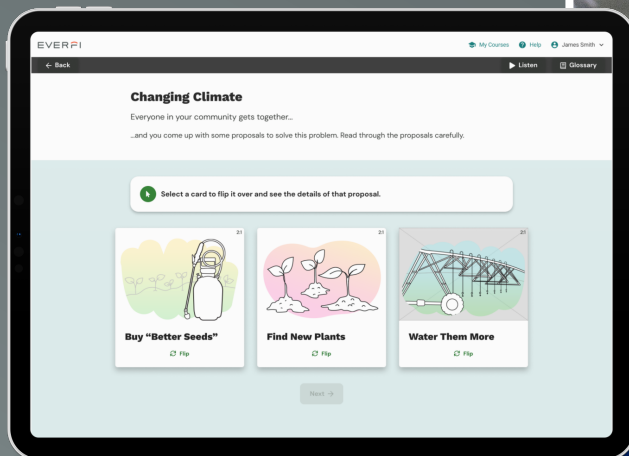
STEM & Career Readiness

Mental Well-Being

Opioid & Prescription Drug Prevention

Digital Wellness & Cyber Safety

Social Emotional Learning



Workplace Culture

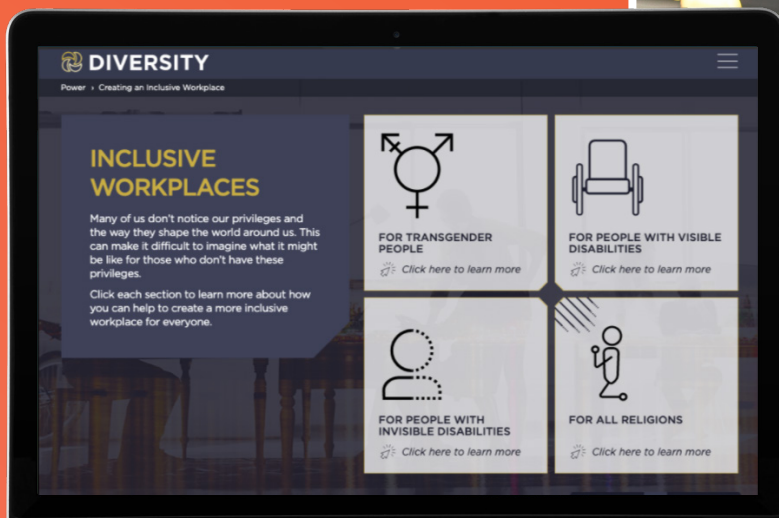
Diversity, Inclusion & Belonging

Harassment & Discrimination Prevention

Global Ethics & Compliance

Data Security & Privacy

Gender & Racial Pay Equity



Your Cause

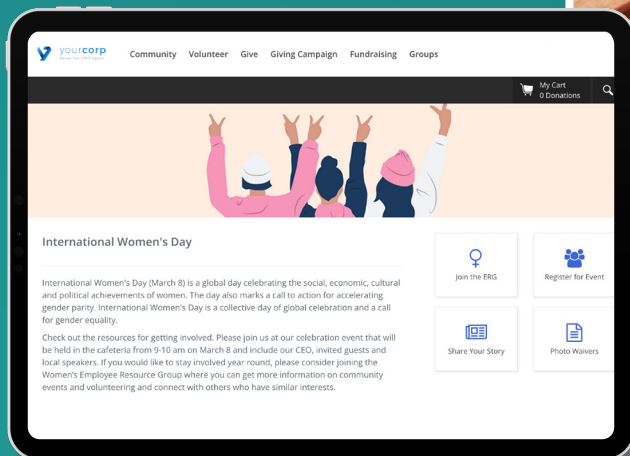
Employee Engagement in Giving Programs

Skills and Community-Based Volunteering

Community Investment with Grants Management

DEI and Employee Resource Groups

Gamified Employee Fundraising



Convening the Biggest
Organizations Around
the World's Most Intractable Issues





intuit.

J.P.Morgan

Kroger

∴ MassMutual

John Hancock

McKinsey
& Company



patagonia

 PELOTON



SPACEX

tapestry
COACH | kate spade | STUART WEITZMAN

 TIAA


TOMS
One for One

Varo

TRUIST 

 Meta

 UBS

 truth
initiative
INSPIRING LIVES
FREE FROM SMOKING,
VAPING & NICOTINE

HCA 
Healthcare

zelle



EVERFI®

EVERFI at-a-Glance



45M

total global learners



14+

years of delivering and capturing the impact of community engagement



25,000+

active K-12 schools



2,000+

customers



*Knowledge is Power
and Power Belongs
to Everyone*

Visit us at everfi.com

@EVERFI



EVERFI®